



**SPECIFICATIONS**

Rated Current: 1.5AMP  
 Contact Resistance: 20mΩ Max  
 Withstand Voltage: 500V AC/DC  
 Insulation Resistance: 1000MΩ Min  
 Operation Temperature: -40°c to +105°c

Contact Material: Brass  
 Contact Plating: Au or Sn Over Ni

Insulator Material: Polyester(UL94V-0)

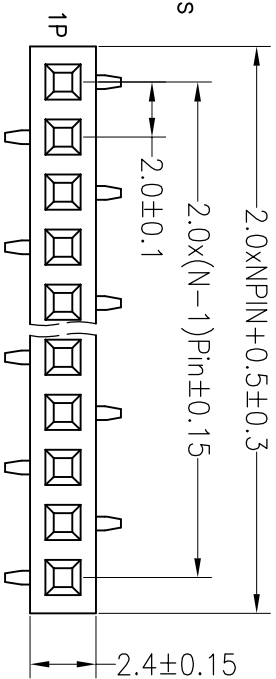
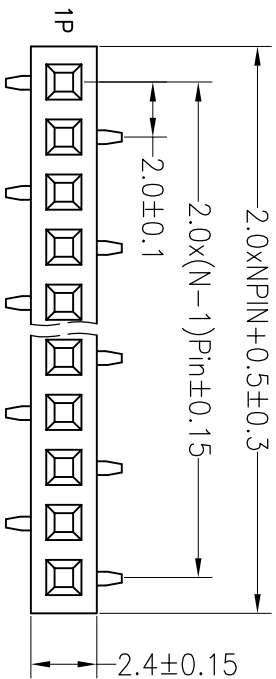
Standard: PA6T

Max. Processing Temp: 230°C for 30-60 seconds  
 (260°C for 10 seconds)

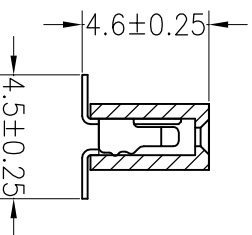
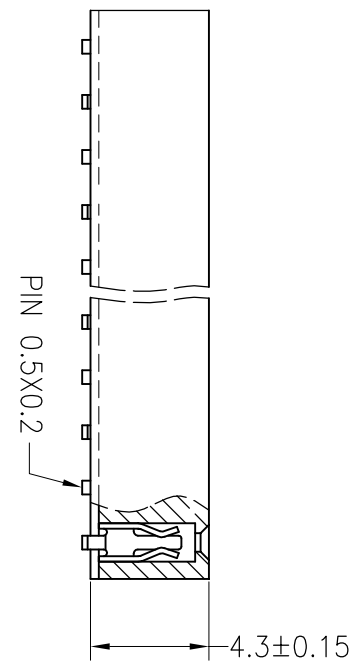
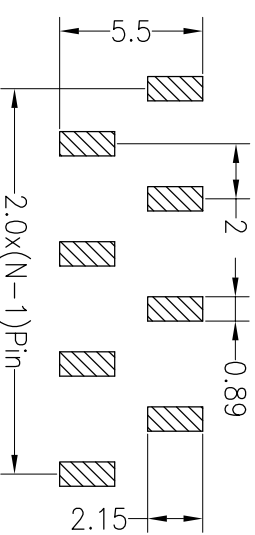
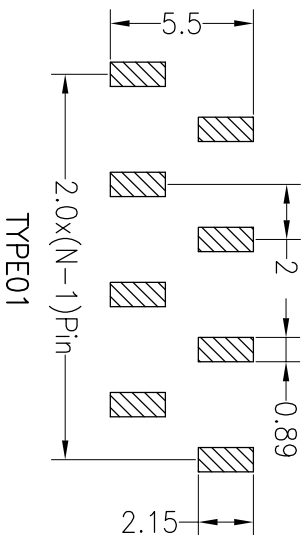
**Ordering Information**

2343-01 XX X N XX M U X 02

- No. of Pins Per Row: 1440
- Insulator Material Option:
  - A=BK-PBT
  - B=BK-PA66
  - C=BK-PA6T
  - D=BK-PA6
  - F=BK-LCP
- Contact Plating:
  - G0: Gold Flash
  - G1: 1U" Gold
  - G2: 1.5U" Gold
  - G3: 2U" Gold
  - G4: 3U" Gold
  - G5: 5U" Gold
  - SO: Gold Flash/Tin
  - SN: Tin
- Packing:
  - O=PE Bog
  - A=Tray
  - T=Tube
  - P=Tube+Cap
  - R=Reel+Cap
  - M=Reel+Mylar



Recommended P.C.B Layout(Top Side)  
 (PCB BOARD TOLERANCE±0.05)



OPERATION		DRAW		SCALE		FIT		TITLE:	
X.X	±0.30	YYuSheng	12.04.18	UNIT	mm	A4	1/1	PART NO. 2343-01XXXXXXXXXU02	
X.XX	±0.20	CHECK		SIZE				2.00PF H4.30mm 1xNpin SMT	
X.XXX	±0.10			SHEET					
Angle	±3°	APPROVE		PROJ.					
DIM	TOL	CHANGE							
DATE	MODIFICATION DESCRIPTION								
REV									
A0	2012.04.18	NEW DRAWING							
1									

**JILIN** 深圳市锦凌电子有限公司  
 SHENZHEN JINLING ELECTRONIC CO.,LTD  
 Tel: 86-755-2997-5806/5802 Fax: 86-755-2997-5892